



HGMC

Introduction

Presented by HG Robotics

Overview

What is HGMC?

HGMC is a ground station application suite designed for vehicles developed by, but not limited to, HG Robotics. It is mainly compatible with Android mobile devices and Windows. Below are the highlight features provided out of the box:

01

Customer Management

Ability to collect customer information including their projects.

02

Mission Planning

Ability to plan the flights upfront based on the mission characteristics. The plan can also be used repeatedly.

03

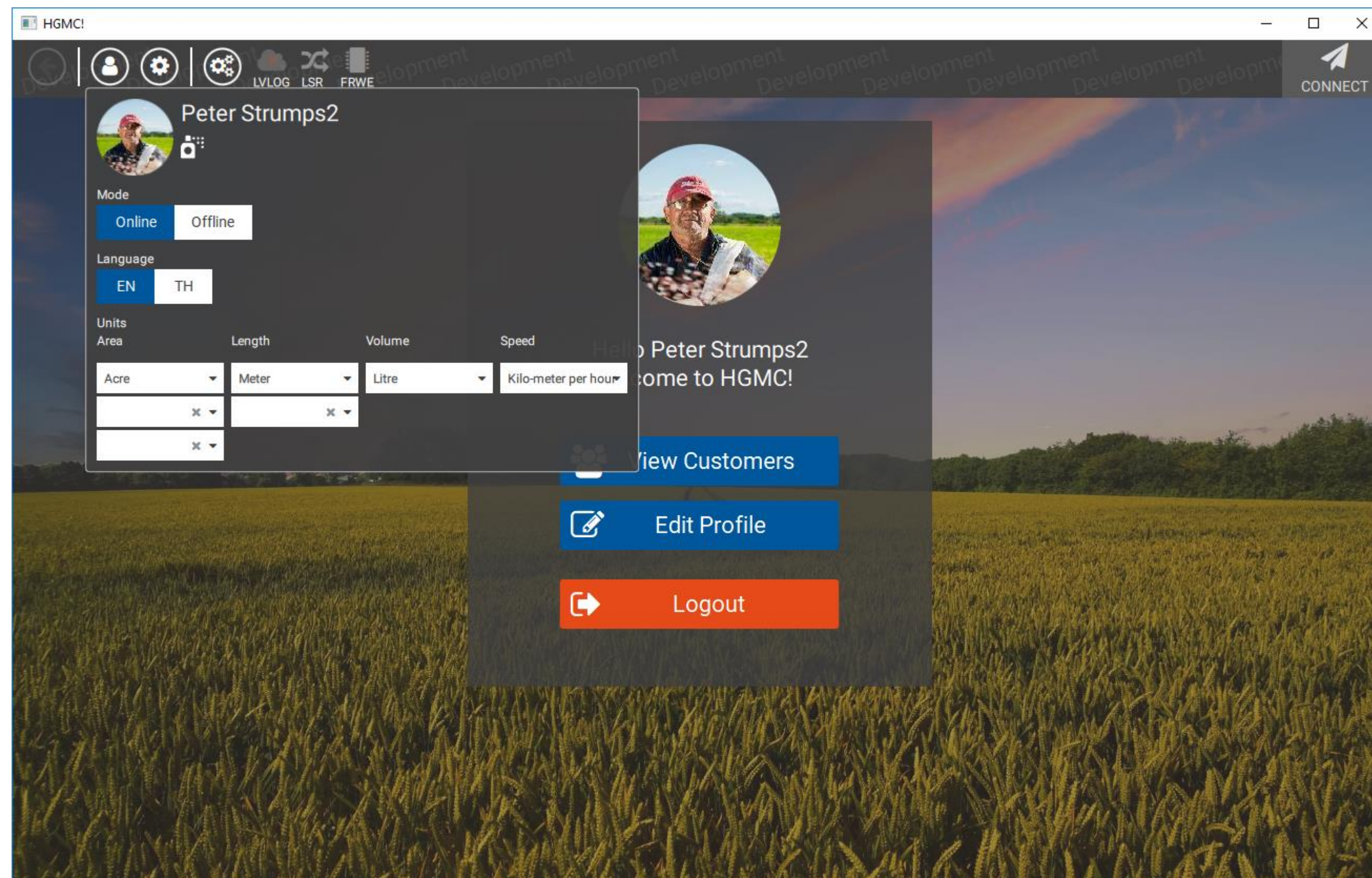
Flight Monitoring

Monitor vehicles during the operations. The system provides status information and warns users when incidents occur.



First Look

Home Screen



Function List

Users can start working by “View Customers” or editing their own profiles

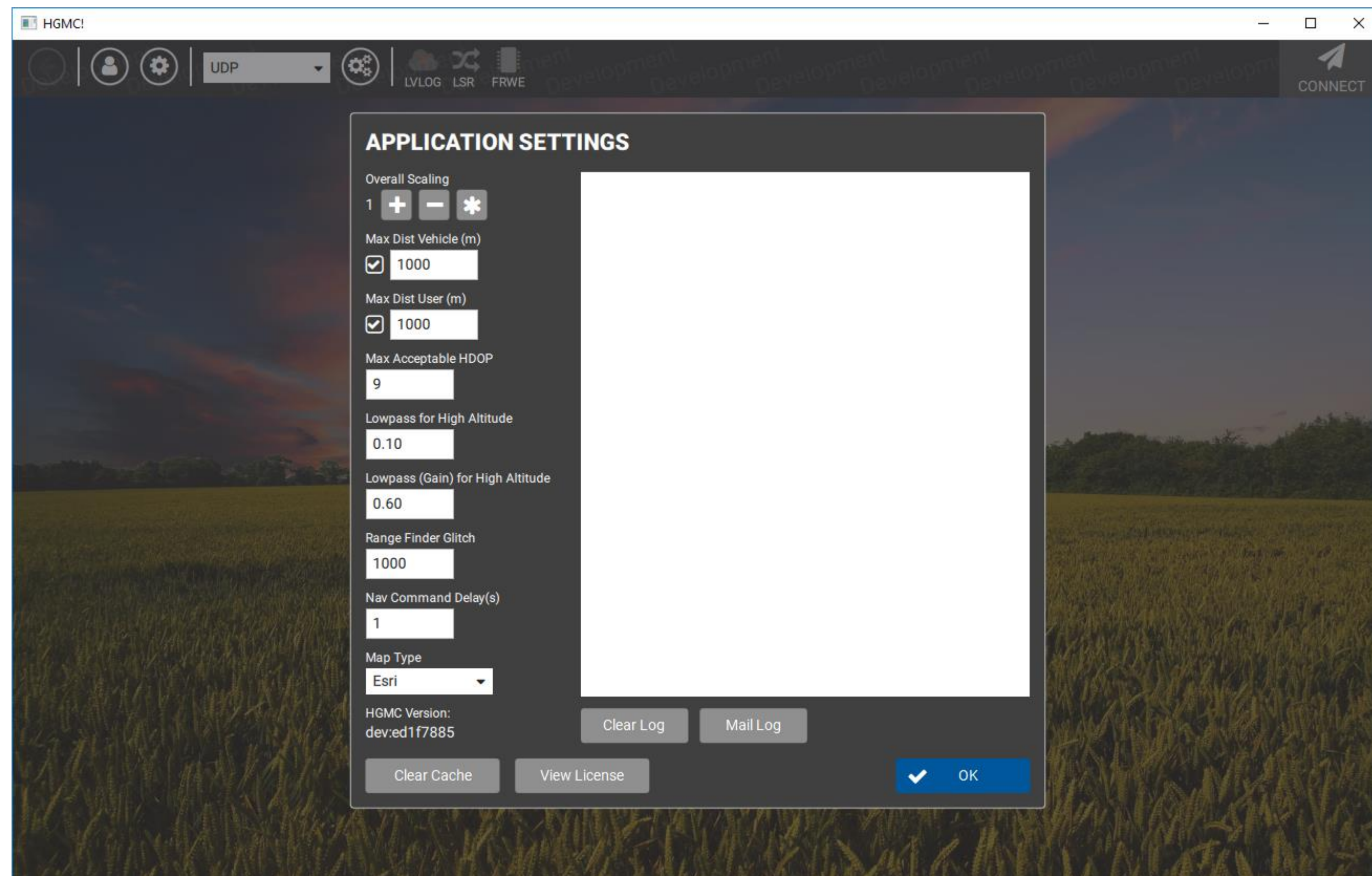
User Menu

The system can be set to operate offline.

Users can choose their language preferences and units used for displaying.

First Look

Application Setting



Parameters

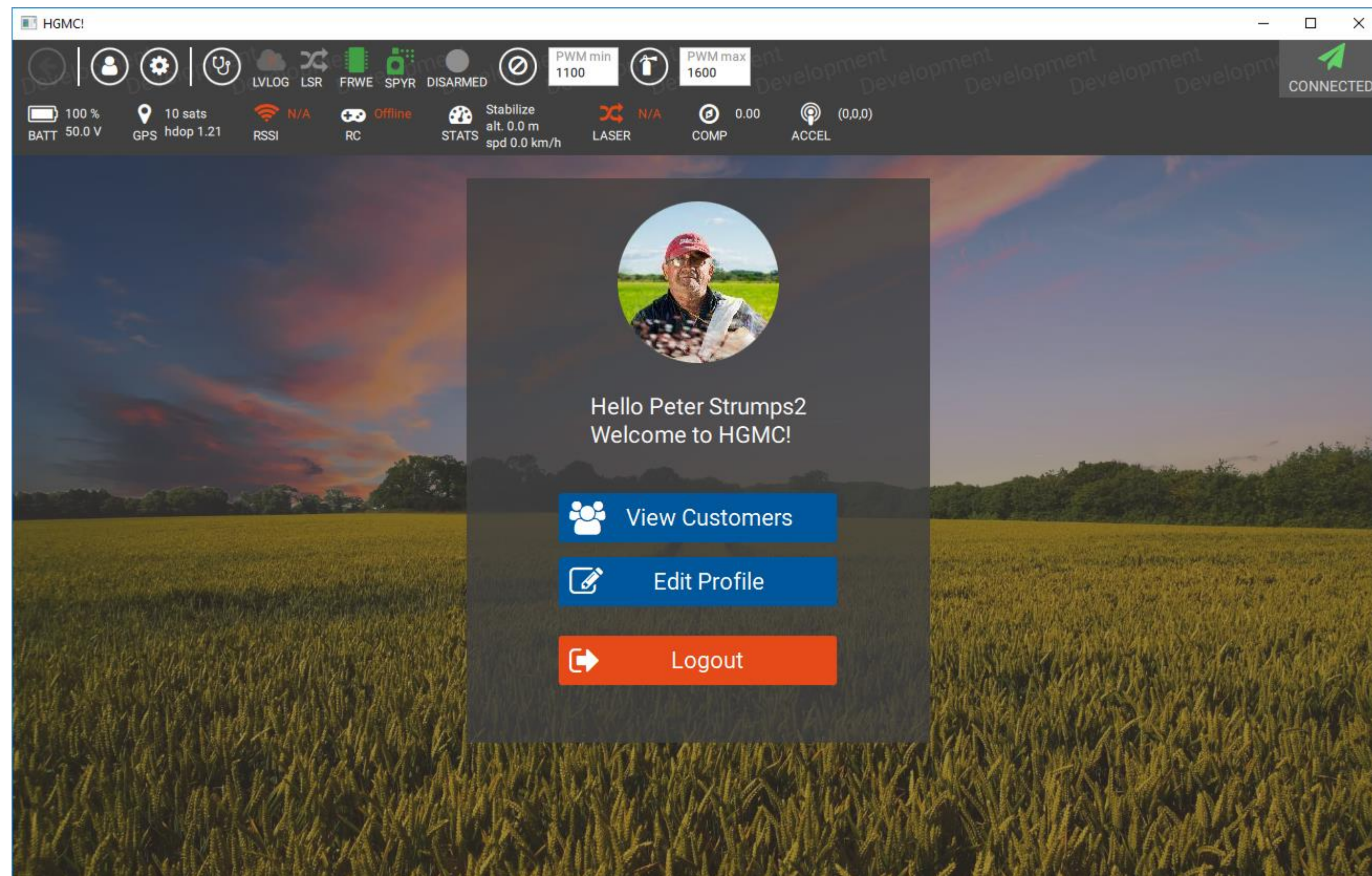
Users change system parameters including map source and font scaling

Log Viewer

Displays the communication logs from connected drones. Users can also submit the log via email.

First Look

Connect to Drone

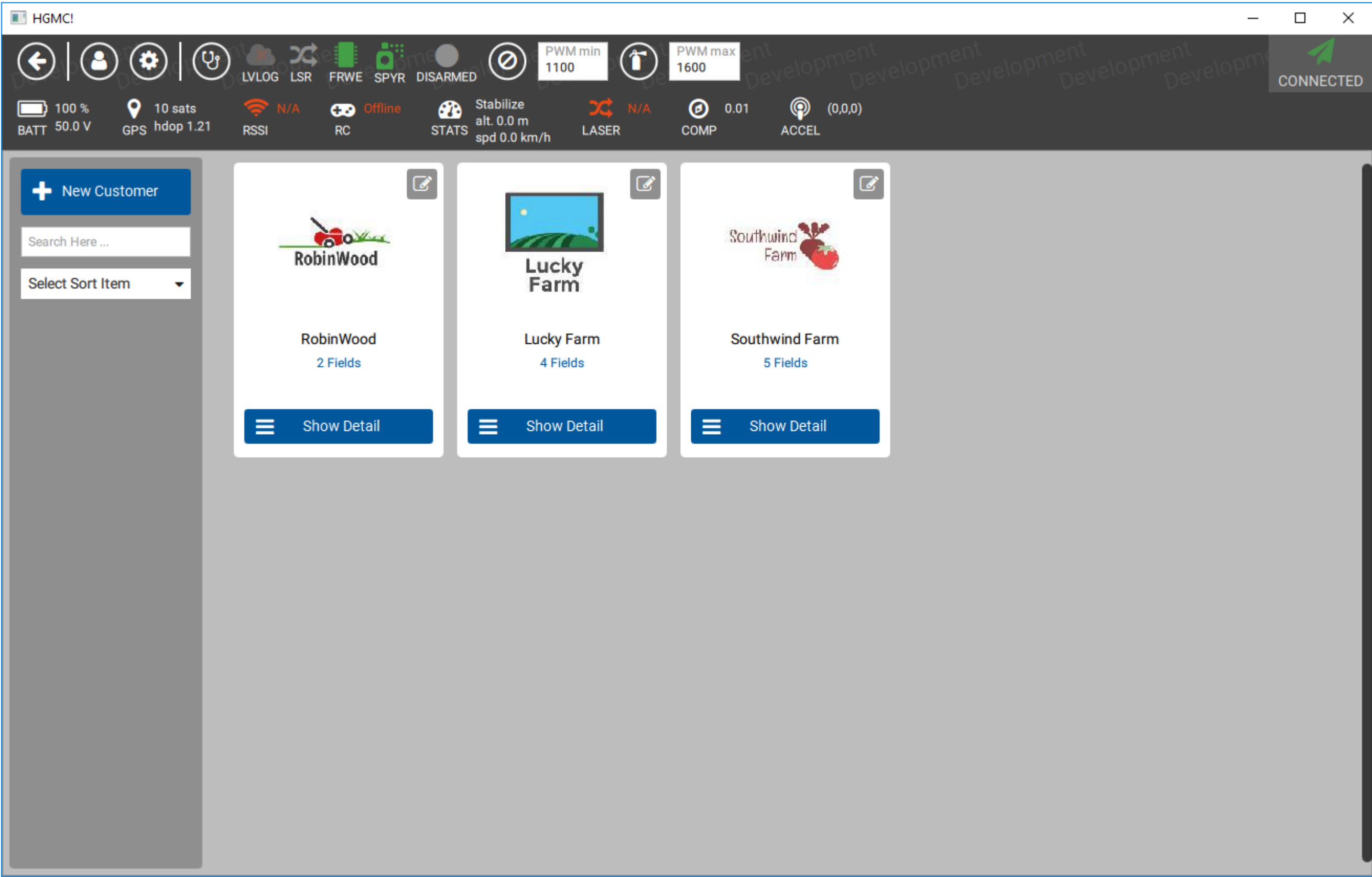


Telemetry Toolbar

Show the list of telemetry items such as battery status, GPS status, and flight mode

Customer Management

Customer List



Customer List

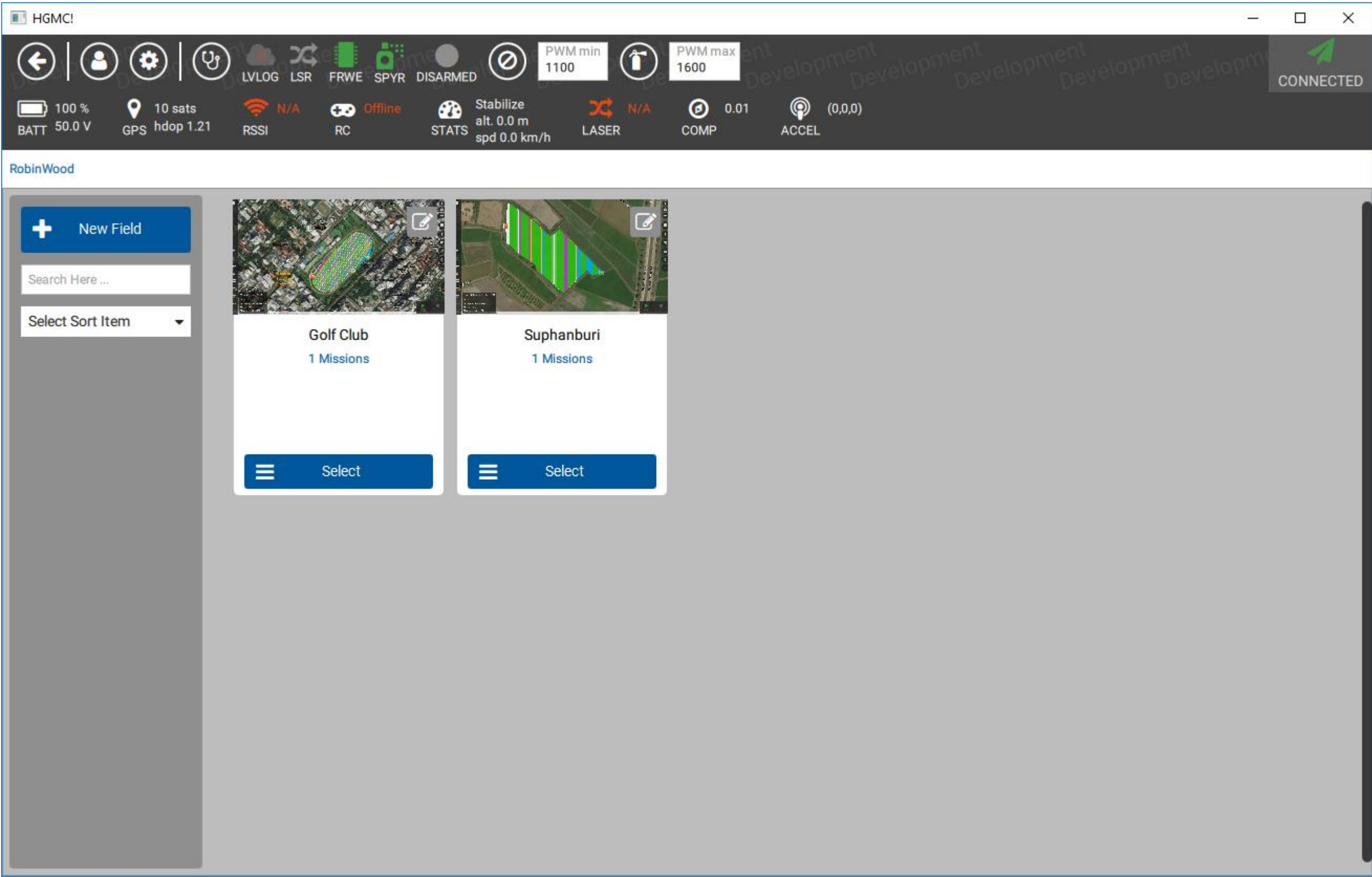
List of all customers which individually presented by cards. Users can input some basic detail such as pictures and names.

Sort and Filter

Ability to search and sort customers by selected criteria.

Customer Management

Field List



Field List

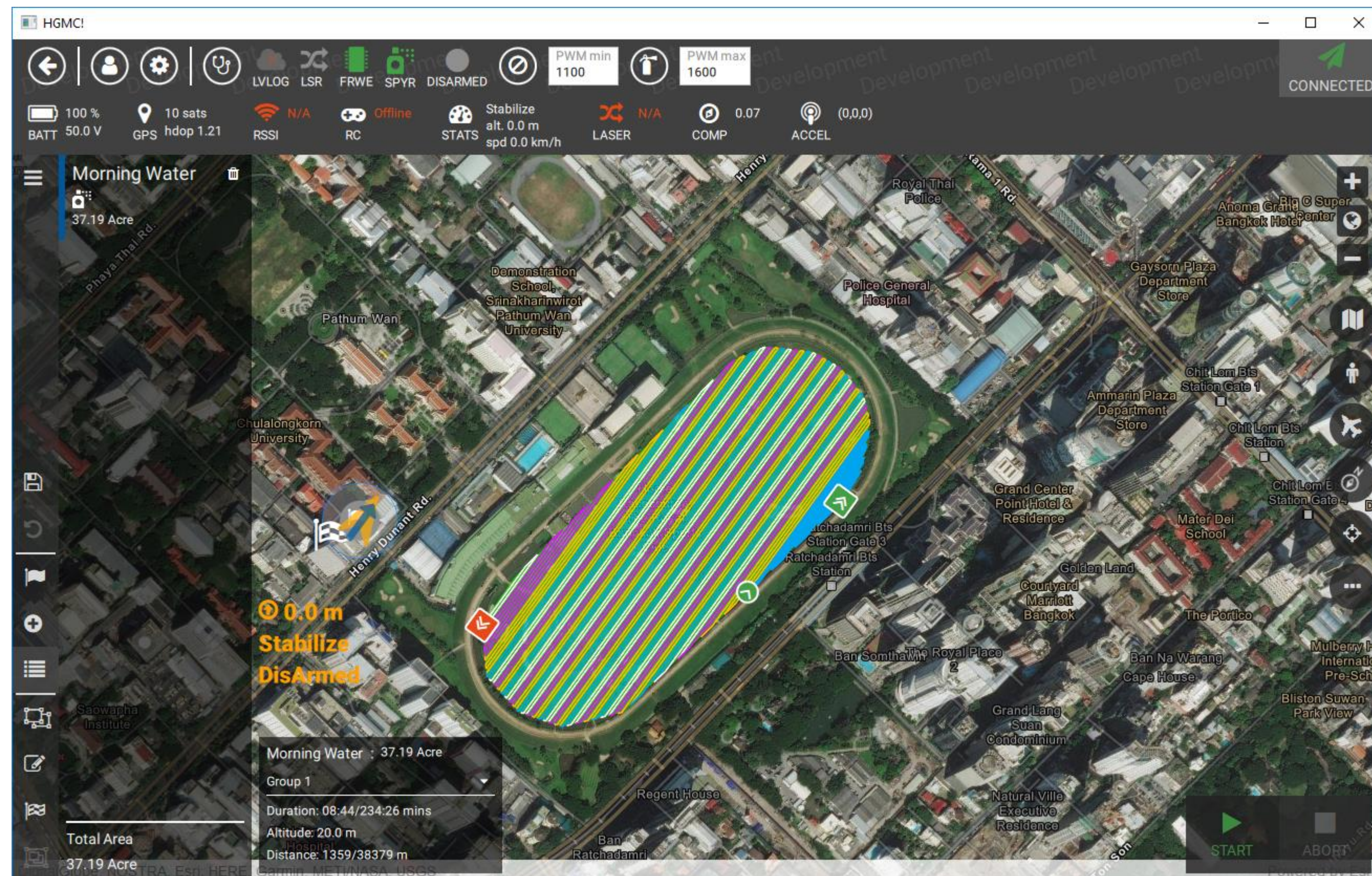
List of fields of individual customer

Sort and Filter

Ability to search and sort fields by selected criteria

Mission Planning

Planning Workspace



Mission List

List of missions of selected field. The panel also displays the mission summary.

Map and Mission Area

Display the mission area on the satellite map.

Mission and Flight Editor Tool

Edit mission parameters such as speed and altitude.

Edit mission area and mission groups.

Identify emergency landing points (Rally points)

Mission Planning

Editing Area



Area Editor

Define the mission area boundary and its coordinates.

Mission Planning

Editing Flight Parameters

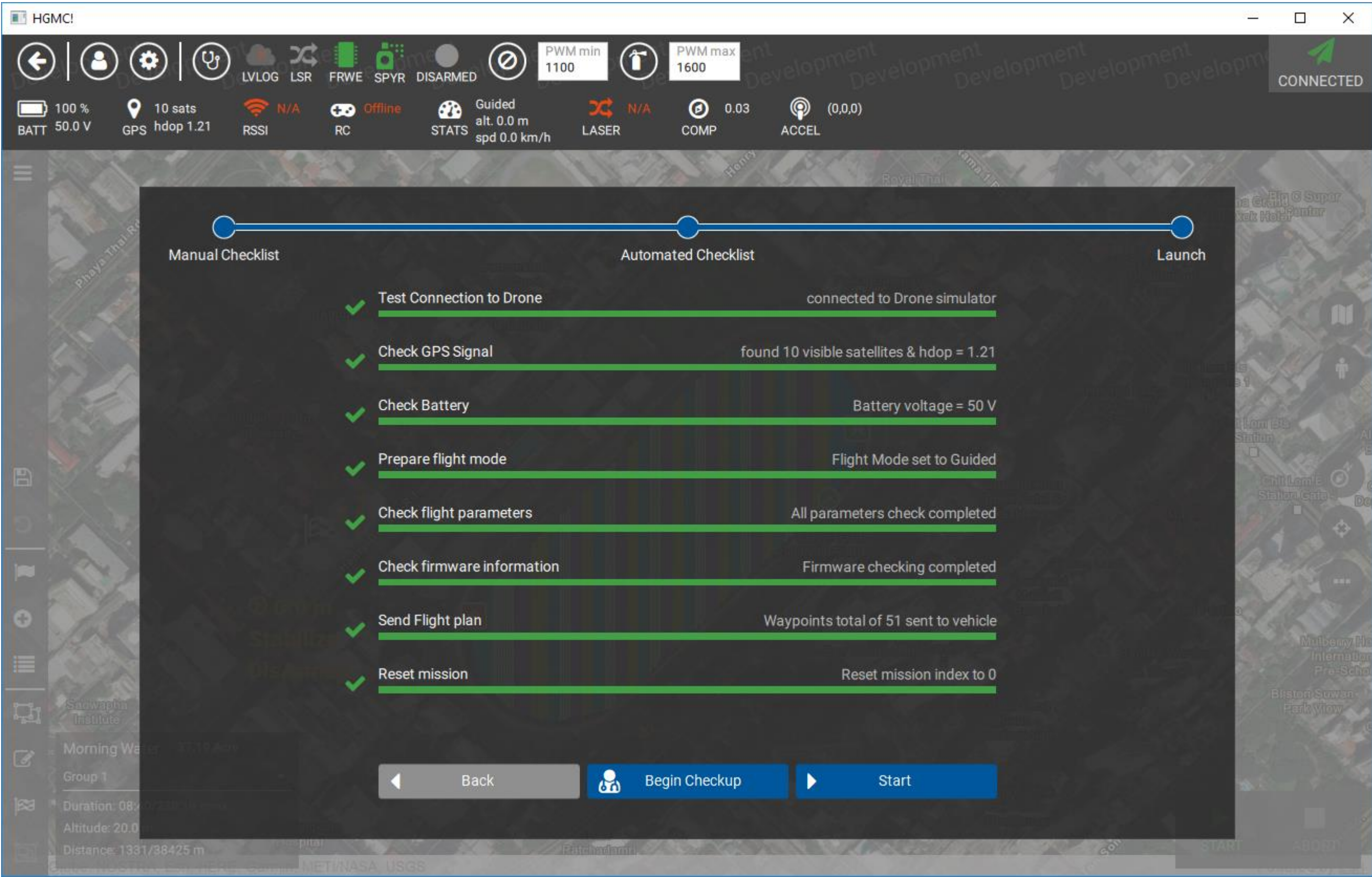


Mission Editor

Define flight parameters such as speed, flight angle or altitude.

Flight Monitoring

Pre-Flight Checklist

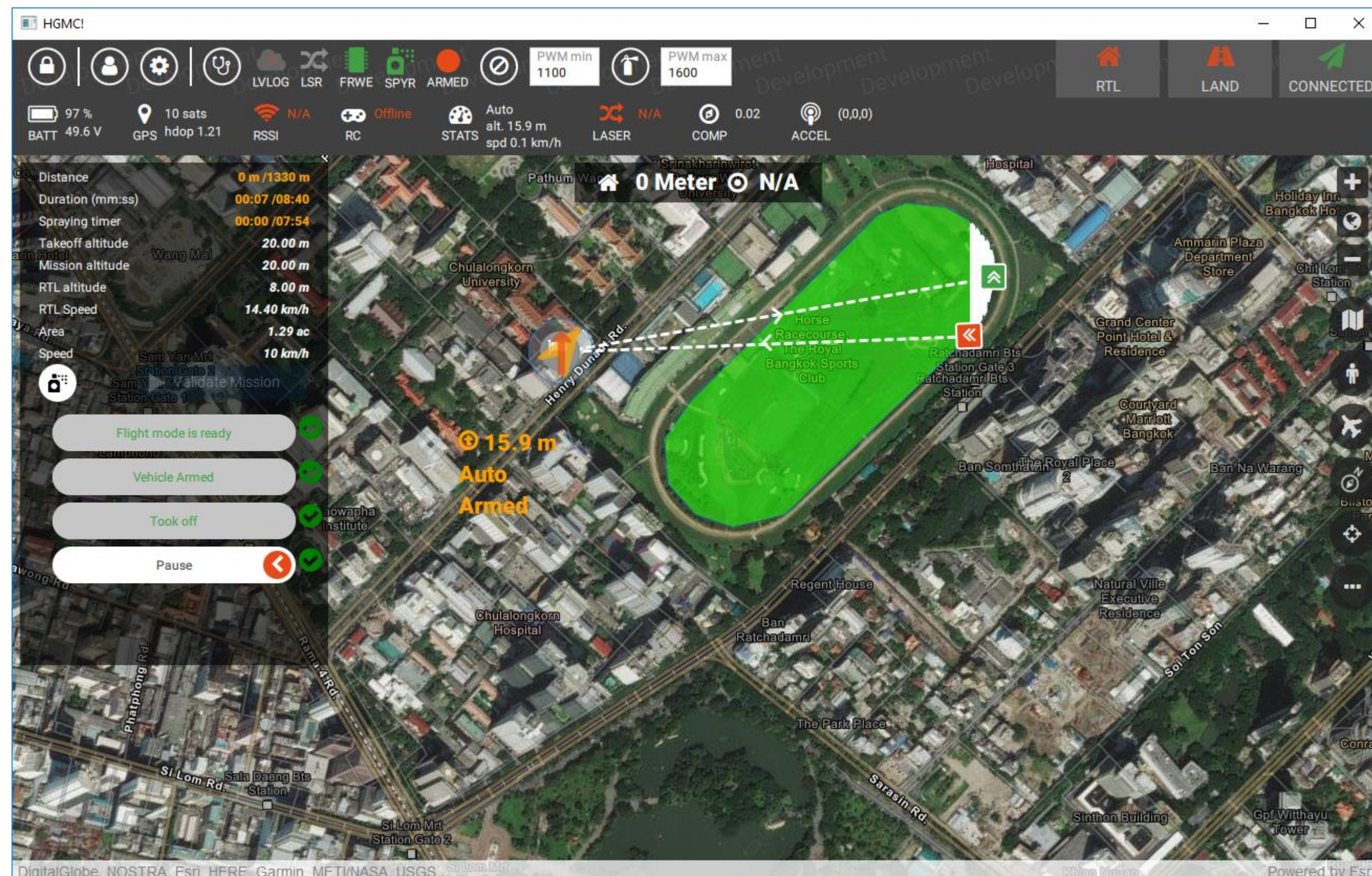


Automated Checklist

Automated self-checking mechanism before the mission start.

Flight Monitoring

Monitoring Workspace



Live Monitoring

Display the drone location in real-time manner when operating missions.

Flight Status

Display the flight information.

Notification

Display the warning messages when any incidents occur, such as battery voltage considerably dropped, or unstable GPS signal.